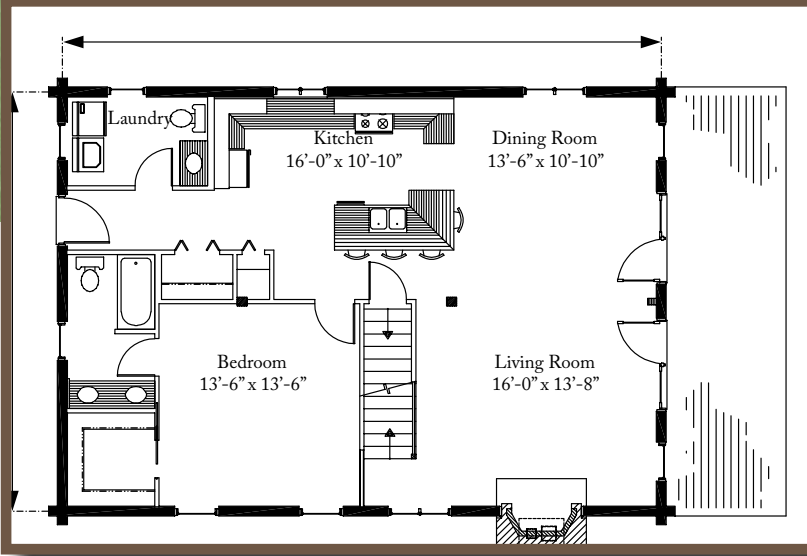
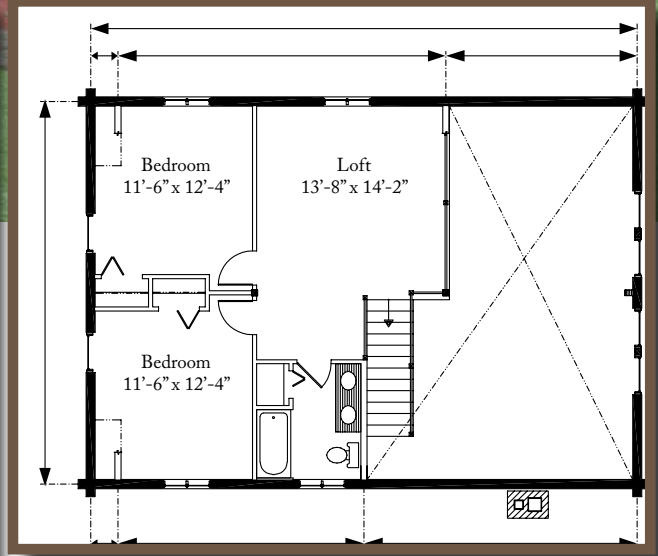


# The *PIEDMONT*

1,764 Square Feet ♦ 3 Bedrooms ♦ 2.5 Baths



**First Floor**



**Second Floor**



*So nice to come home to™*

For more information, please call:  
**800-REAL-LOG**

or visit:

[www.realloghomes.com](http://www.realloghomes.com)

# REAL LOG HOMES®

## Standard Package Components

- Pre-cut solid log walls and gable ends (Per Plan) Featuring our Interlock™ Log Joinery System Including:  
FastenMaster® OlyLog® or LogHog® Fasteners, PVC Lock-spline™, Norton Log Home Foam™, Sashco® Log Builder Caulk, Foam Blocks and Pre-Installed Corrugated Fasteners, Special Milled Framestock
- Andersen® 400 Series Windows and Patio Doors With:  
Rigid Vinyl Exterior, High Performance (Low-E) Glass, Screens, Stone Hardware, and Natural Clear Pine Interior
- Therma-Tru® Fiber-Classic Doors
- Log Siding Skirtboard
- Pre-Cut Log or Timber Joists Including Pre-Notching Log Wall (Per Plan)
- Pre-Cut and Notched Heavy Timber Girders (Per Plan)
- Pre-Cut Log or Timber Rafters (Per Plan)
- Glu-Laminated Ridge Beams (Per Plan)
- Log or Timber Support Posts & Settling Screw-jacks as Required
- Porches:  
Log Posts, Pre-Cut Log Porch Plates and Pre-cut Log or Timber Rafters
- Tim-Bor®, an EPA-Registered, Non-Toxic Wood Preservative
- 3 Sets of Blueprints with Assembly Details
- Pre-Cut Log Wall Assembly Instructions
- Complete List of Materials Included in the Package
- Fully Illustrated Construction Manual
- Four Hours of Complimentary Technical Assistance

*The standard package components may vary depending on the features of a particular home. Contact us or your Independent Representative for more details and our extensive list of options.*



*So nice to come home to™*

For more information call:

**800-REAL-LOG**

or visit:

**www.realloghomes.com**